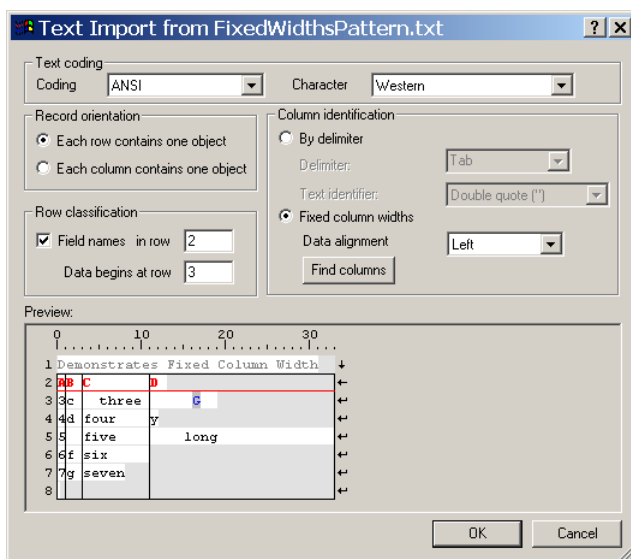


- Visualization of **non printable characters** in the preview:



For example, the blue letter **G** in the third row in the above picture, indicates that the bell character (code 7) occurs at this position. The various line breaks are visualized as arrows. Please refer to this [table](#) for details.

Command line parameters

- The following new parameters have been added:
 - `-ANSI` for [Import](#) and [Export](#)
 - `-attributeLine` for [Import](#)
 - `-charset` for [Import](#) and [Export](#)
 - `-dataLine` for [Import](#)
 - `-doubleQuotes` for [Import](#)
 - `-noQuotes` for [Import](#)
 - `-password` for [InfoZoom data sources](#)
 - `-saveCopyAsFOP` for [Save](#)
 - `-singleQuotes` for [Import](#)
 - `-useImportNames` for [Export](#)
 - `-UTF16BigEndian` for [Import](#) and [Export](#)
 - `-UTF16LittleEndian` for [Import](#) and [Export](#)
 - `-UTF8` for [Import](#) and [Export](#)
- These old parameters are regarded as deprecated and are no longer described. They are, however, still supported by the program:
 - `-saveAsFOP`
 - `-saveFOP`
 - `-saveObjectsFOP`
 - `-saveObjectsFOX`
- The [command line parameter help](#) has been completely re-written, updated and filled with numerous examples. A complete [list of all commands](#) is included.

Miscellaneous

- Support for *Microsoft's* operating system *Vista*
- Better protection for attributes that are set to *invisible* in the [Permissions](#) dialog:
 - Prevents: copying, exporting, reports, (new) reference in derived attributes
 - Command line: No zoom and no join on invisible attributes

- A fox table with a password on the *Permissions* dialog is saved (like *.fop) encrypted
 - The SDK can no longer load tables whose *Permissions* dialog is password-protected
 - **Excel Wizard** for import and export: **Office 2007** support
 - Dynamic language switching at runtime
 - New command [Show Current Query...](#) on *View* menu
 - Following the path name of [images](#), an **image cut** can now be specified.
 - New function [MATCHES\(text, regular expression, case sensitive\)](#)
 - New function [REPLACEMATCH\(text, regular expression, replace text, case sensitive, multiple replace\)](#)
 - Improved print preview: systematic print page layout
 - [Page Setup](#) dialog: \$-variables (\$PAGE, \$DATE) now in English for all languages (also \$COL and \$ROW)
 - Toolbar for *Crystal Reports*
 - Context-sensitive help (via *Context Help* on the *Help* menu) for special attribute values in the table, for example: images, links, colored values, custom-sorted attributes, lists and truth values
 - Stricter handling of attributes whose format is not yet exactly defined
 - **Reload**: If an attribute is assigned according to its **normal** name (and not its import name), this name is then noted as import name for future reloads as well.
 - New **Warning** if Reset has not been pressed for a very long time, with turn off [option](#)
 - New **Warning** if a table with a long initial query is to be saved, with turn off [option](#)
 - InfoZoom **version number** on the title bar
 - Minor changes in the context menu for the attribute column:
removed: [Value List](#), [Dim](#), [Hide Single-Valued Attributes](#), [Show Hidden](#)
new: [Insert Duplicate](#) and [Insert Link](#) (frequently required)
 - InfoZoom runs on 64-bit Microsoft operating systems if the 64-Bit *.NET-Framework 2.0* is manually installed **before installation**. This is available from [Microsoft](#).
 - Bug fixes
-