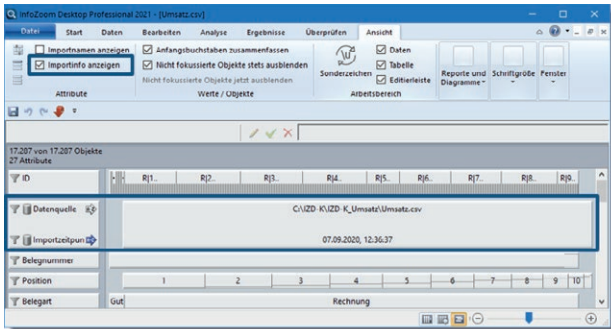


# What's New in InfoZoom Desktop 2021



# New Functions – Highlights



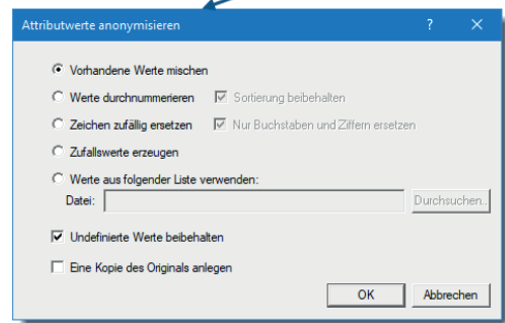
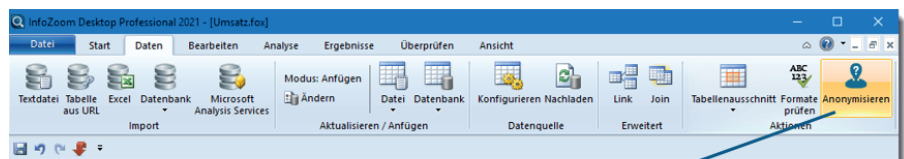
## Show Import Information

Have you imported data from various sources? Thanks to the new »Show Import Info« function, you can keep track of all imported tables. The time of import and the data source are automatically and implicitly recorded for each table. You can enable the information via View → Attributes → Import → Info.

## Anonymize Data

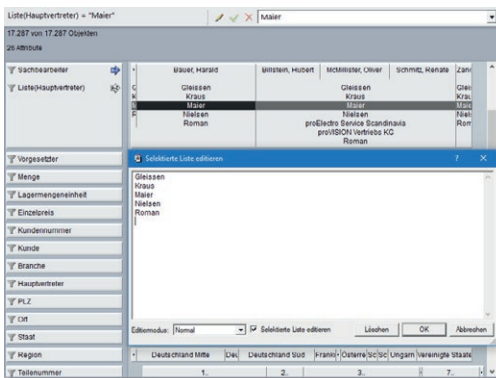
You can now distort or anonymize the values of individual attributes with just a few clicks so that they can no longer be related to a certain person. The following options are available for anonymizing data:

- ▶ Shuffle existing values
- ▶ Number values consecutively
- ▶ Replace characters randomly
- ▶ Generate random values
- ▶ Use values from list



## Edit Lists

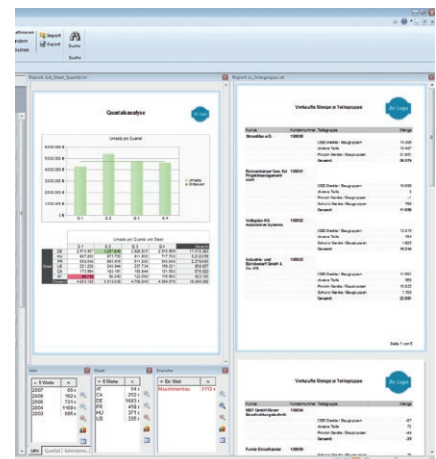
In InfoZoom Desktop 2021, the editor helps you create and edit lists.





## Integration of List and Label 26

We are skipping a version: with InfoZoom Desktop 2021, we switch from the integration of List & Label 24 to the latest version, List & Label 26. This unlocks a number of new features and optimizations for you:

- ▶ Enhanced user interface
- ▶ Reusable sub-reports
- ▶ Improved preview
- ▶ Optimized PDF export
- ▶ New print functions
- ▶ and many more



# Data Sources and Processing of Results

Import → 	Export  →
Files Text/CSV files (local/URL), XML/JSON (local) and native support of the Excel format (local/URL)	Files Text/CSV files, and native support of the Excel format
Databases Microsoft Access, SQL Server, and virtually all other ODBC data sources	InfoZoom Anywhere Publishing of analysis data, e. g. for Anywhere users
Data Warehouse Native support of Microsoft Analysis Services	.NET Data Provider Access to InfoZoom as .NET data source
	List & Label (optional) – Exporting reports, labels and cards as PDF, PPT, XLS and other formats

## System Requirements

	32-Bit versions	64-Bit versions
Operating system	Windows 32- und 64-Bit Versionen (Windows 8.1, 10 oder Windows Server 2012 R2, 2016, 2019)	Windows 64-Bit versions
Disk space	1 GB min	1 GB min
Memory	4 GB min	8 GB or more
Resolution	SVGA min (1024 × 768/256 colors min)	
Components*	.NET-Framework 4.7.2 CodeMeter Runtime as of version 7.10a Visual Studio 2010 tools for Office Runtime (for InfoZoom Excel add-in)	

For Windows®



Multicore processor recommended

\* Components are contained in the respective InfoZoom installation

# Comparison Chart

	Viewer Plus	Explorer	Business	Professional	OEM
<b>Loading Data</b>					
Open File	●	●	●	●	● <sup>1</sup>
Import/Reload Excel File <sup>2</sup> (local/URL)	○	●	●	●	○
Open/Reload ASCII File (TXT, CSV, FOC) (local/URL)	○	●	●	●	○
Open/Reload Database (ODBC, OLE DB, XML, JSON)	○	○	○	●	○
Dynamic Data Source (.NET Data Provider)	○	●	●	●	●
<b>Searching and Cleaning</b>					
Find	●	●	●	●	●
Find and Replace	○	●	●	●	●
Mark Selection	○	●	●	●	●
Group and Couple Attributes	○	●	●	●	●
Create Table Sections and Samples	○	●	●	●	●
Execute Queries	● <sup>5</sup>	●	●	●	●
Create, Export and Import Queries	○	●	●	●	●
Insert, Edit and Delete Objects	○	●	●	●	●
<b>Analyze</b>					
Link Tables (Link/Join)	○	○	●	●	○
Define Analysis Group	○	○	●	●	●
Dimension Analysis Group	●	●	●	●	●
Formulas, KPIs and Statistics	○	○	●	●	●
Classifications, Case Differentiation	○	○	●	●	●
Color and Share Analyses	○	○	●	●	●
Date Groups	○	○	●	●	●
Define Drilldown Attribute	○	○	●	●	●
Table Metadata (Data Quality/Statistics)	○	○	○	●	●
Automation with Command Line Parameters	○	○	○	●	○
<b>Publish Results</b>					
Create Charts and Tables	○	●	●	●	●
Excel Export Wizard (Pivot Tables) <sup>2</sup>	○	●	●	●	●
InfoZoom Excel Add-In <sup>3</sup>	○	○	●	●	●
Publish on InfoZoom Server	○	○	○	●	○
List & Label	○	● <sup>6</sup>	● <sup>7</sup>	● <sup>7</sup>	○
<b>Security</b>					
Protect Table	○	●	●	●	●
Set Permissions	○	○	○	●	●
Log Processing Steps <sup>4</sup>	●	●	●	●	●

● = Yes  
○ = No

1 = InfoZoom OEM Edition reads and writes only its own FOX file format.  
2 = Requirement: Excel as of version 2007 must be installed on your computer.  
3 = Requirement: Office as of version 2007 must be installed on your computer.  
4 = Optional

5 = Restricted, reporting functions cannot be used.  
6 = Optional List & Label Viewer  
7 = Optional List & Label Viewer/Designer



humanIT Software GmbH  
Brühler Straße 9 · D-53119 Bonn  
+49 (0)2 28 9 09 54 - 0  
info@humanit.de  
www.infozoom.com

Follow us:  
[f/infozoom](https://www.facebook.com/infozoom)  
[t/infozoom](https://twitter.com/infozoom)  
[yt/infozoomcom](https://www.youtube.com/infozoomcom)

All rights reserved.  
All trademarks mentioned are the property of their respective owners.  
As of: January 2021, subject to change without notice